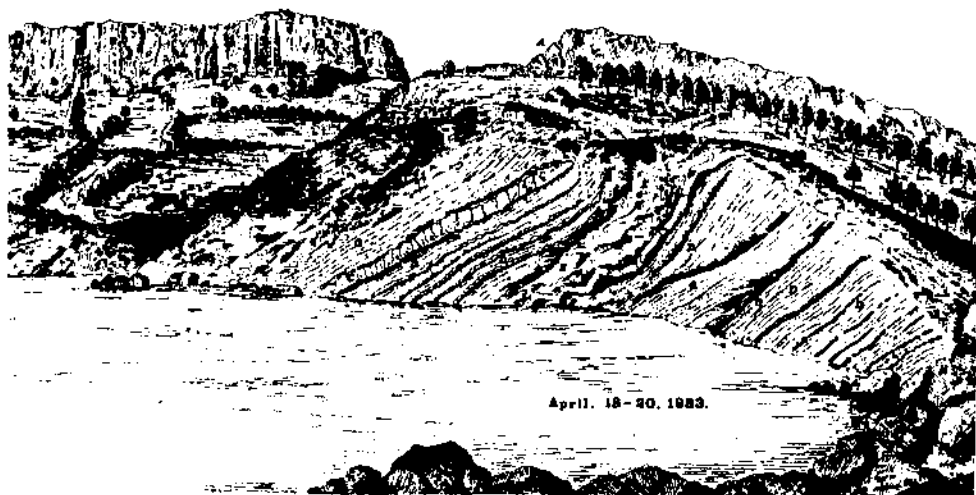


# **I N T E R N A T I O N A L A S S O C I A T I O N O F S E D I M E N T O L O G I S T S**

## **NEWSLETTER**

**N°66 FEB. 1983**

**IAS 4<sup>th</sup> EUROPEAN MEETING  
SPLIT, YUGOSLAVIA**



**April. 18-20, 1983.**

NEWS FROM OUR REGIONAL MEETINGS  
=====

Our 4th Regional Meeting, SPLIT (Yugoslavia, April 18-20, plus pre- and post-meeting field trips) seems to have received a very positive answer from our membership, as, up to now, more than 250 registrations have been notified. This meeting appears very important to many of us as, beside our common fascination for sedimentology, it will give us a most welcome opportunity to strengthen our contacts with our colleagues from Eastern European countries and settle bases for scientific exchanges.

Our 5th Regional Meeting will be held in MARSEILLE, France in the spring of 1984 and general information will be provided in one of our forthcoming newsletters.

Our 6th Regional Meeting will be held in Spain (1985); we shall know more about it after the Meeting of the Association of Spanish Sedimentologists next Fall.

Beside these, we have received three more invitations that we are trying to organize in a reasonable period of time.

This suffices to show the increasing success of this type of meetings.

NEWS FROM THE BUREAU  
=====

The new Bureau met twice in the last six months and will meet again in April. The main preoccupations concerned : (1) the analysis of our Hamilton Congress and preparation of the 1986 one; (2) the preparation of a new policy resulting from the changes of statutes adopted at the General Assembly; (3) organization of our Regional Meetings and handling the "flow" of invitations; (4) the

analysis of the present statutes, editorial policy and scope of Sedimentology; (5) the preparation of our forthcoming Special Publications; (6) the consolidation of our financial health, of our assistance to young scientists, of the low price of our publications; (7) our contribution to and collaboration with the I.U.G.S. ad hoc Committee on Sedimentology. Reports on these various points will appear in forthcoming issues of the Newsletters.

A N N O U N C E M E N T S  
=====

F U T U R E M E E T I N G  
=====

May 11-13, 1983

CANADA (Victoria)

GEOLOGICAL ASSOCIATION OF CANADA ANNUAL MEETING

The 1983 Annual Meeting of the Geological Association of Canada, the Mineralogical Association of Canada and the Canadian Geophysical Union will be held in the beautiful West Coast city of Victoria, British Columbia, May 11-13. Special sessions of particular interest to sedimentologists include :

1. Coastal processes and continental margin sedimentology.
2. Mass transport - mechanisms and effects.
3. Deep ocean mineral deposits and the Cyprus project.
4. The origin of sedimentary basins.

Two short courses will be given :

1. Coal petrography : its principles, methods and applications.  
May 8-10 - Cdn \$150 including field trips.  
Contact : D. Grieve, District Geologist ,  
Box 1290, Fernie,  
B.C. Canada V0B 1M0  
Tel. : (604) 423-6884

2. Sediment - hosted stratiform lead - zinc deposits.

May 9-10 - Cdn \$115

Contact : D.F. Sangster  
Geological Survey of Canada  
601 Booth street  
Ottawa, Ontario  
Canada K1A 0E8  
Tel. : (613) 995-5500

or

D. MacIntyre  
Geological Branch  
B.C. Ministry of Energy, Mines,  
and Petroleum Resources  
Parliament Buildings  
Victoria, B.C. Canada V8W 1X4  
Tel. : (604) 387-5068

There will also be several field trips of interest to sedimentologists. For further information, contact : Vic Preto  
Ministry of Energy, Mines and Petroleum Resources  
P.O. Box 880, Station "E"  
Victoria, B.C. Canada V8W 2R9 (tel. 387-5538)

1. Quaternary geology of the Fraser Delta Lowlands,  
May 8-10 - Cdn \$210
2. Vancouver Island Coastal Environments,  
May 7-10 - Cdn \$245
3. Geology and tectonics of the Queen Charlotte Islands  
May 14-18 - Cdn \$660
4. Quaternary geology of Southern Vancouver Island,  
May 14-15 - Cdn \$55
5. Stratigraphy and structure of the Tertiary of Southern Vancouver Island and the Olympic Peninsula,  
May 14-17 - Cdn \$225
6. Stratabound base metal deposits in Southeastern British Columbia and Northwestern Montana,  
May 7-10 - Cdn \$350
7. Slope stability problems in the Southern Coast Mountains,  
May 14-16 - Cdn \$240
8. Lower Fraser river coastal environments,  
May 14 - Cdn \$30

For registration materials and further information on this conference contact :

Tom Lietaer  
University Extension  
Conference Office  
P.O. Box 1700  
Victoria, British Columbia  
Canada V8W 2Y2  
Tel. : (604) 721-8475

(from B. Bornhold)

#### SHORT COURSES

=====

The Mineralogical Society of America will sponsor a Short Course entitled "Carbonates : Mineralogy and Chemistry" before the 1983 MSA/GSA Annual Meeting in Indianapolis, Indiana. The Short Course will be held from Friday morning through Sunday noon October 28-30. An introductory reception will be held the evening of October 27.

Emphasis will be placed on low-temperature carbonates, although lectures on high T and P phase equilibria and occurrences will be included as they are of general interest. The program includes intensive reviews of the following topics : crystal chemistry and phase relations of rhombohedral and orthorhombic carbonates, dissolution and precipitation phenomena, stability and occurrences of magnesian calcites, trace element and stable isotopic compositions, defect structures in natural carbonates, and metamorphic carbonates. Speakers include : E.J. Essene (Univ. of Michigan); J.R. Goldsmith (Univ. of Chicago); F.T. Mackenzie (Univ. of Hawaii); J.W. Morse (Texas A&M Univ.); R.J. Reeder (SUNY at Stony Brook); J.A. Speer (Virginia Polytechnic Inst.); J. Veizer (Univ. of Ottawa); and H.R. Wenk (Univ. of California, Berkeley). The Short Course lectures will form the basis of Volume 11 of the MSA series Reviews in Mineralogy.

For further information, write :

R.J. Reeder  
Department of Earth and Space Sciences  
State University of New York  
Stony Brook, N.Y. 11794  
U.S.A.

Comparative Sedimentology Division, State University  
of Utrecht, The Netherlands.

CLASTIC TIDAL DEPOSITS  
-----

Course nrs. 1/83, 2/83, 5/84.

The Comparative Sedimentology Division of the State University of Utrecht (The Netherlands) is organizing a number of short field courses on clastic tidal deposits in 1983 and 1984.

The main emphasis of the course will be on a comparison of features of recent, subrecent and ancient sediments, and the development of diagnostic criteria for tidal deposits. Distinctive features of different types of tidal environment (subtidal, intertidal, supratidal) will also be demonstrated in the field.

The course will be based in the SW part of the Netherlands where the excavation of large construction pits allows a unique opportunity for the study of sub-recent tidal deposits at depths up to 15 m. below Mean Sea Level.

Some features of the course are outlined below.

1. PHYSICAL PROCESSES. A short introduction to tidal theory and sediment transport will be given, and the relationship of these processes to tidal bedforms observed in the recent environment will be discussed. Relationships between bedforms morphology and migration, internal structures, and preservation potential will also be demonstrated.
2. BIOLOGICAL PROCESSES. Faunal and floral distribution will be observed in the field, and their effects on sedimentation discussed. In addition to this the relationship between organic production and early diagenesis will be shown.
3. ENVIRONMENTAL STUDIES. The existence of reliable hydrographic charts dating back to the 19th century and detailed echo-sounding maps dating back to 1959 allows the field areas studied to be placed in their historical context, and sites of maximum preservational potential to be identified.
4. ANCIENT ANALOGUES. Case histories of ancient tidal deposits currently being studied by members of the Department will be presented, and comparisons will be made with the deposits seen in the field.

5. FIELD TECHNIQUES. There will be opportunities to see sampling and measurement techniques demonstrated in the field, e.g. production of laquer peels, and simple coring techniques.

COURSES IN 1983 : August and September (course nrs. 1/83 and 2/83).

COURSES IN 1984 : August (course nr. 5/84).

COSTS : U.S. \$850,-

25 % reduction for university scientists and junior scientists (under 26 years). The costs include accommodation, food, working facilities, and transport during the course.

#### MODERN AND ANCIENT TIDAL DEPOSITS IN WESTERN EUROPE

-----

Course nr. 3/83.

The emphasis of this excursion will be on the comparison of modern and ancient clastic tidal deposits. The complicated relationship between recent tidal processes/products and their ancient analogues will be shown in detail. Also for the first time some classic areas on clastic tidal deposits in western Europe will be shown within one excursion.

The excursion will start in the Oosterschelde, SW Netherlands, and continue via Miocene tidal deposits in Belgium, Jurassic minette mines in Luxemburg, the Molasse near Fribourg, Switzerland, Miocene deposits in the Rhône valley in southern France and finally the Roda sandstone in the Tremp-Graus basin in the southern Pyrenees, Spain.

The excursion will be organized by the Comparative Sedimentology Division in cooperation with the University of Fribourg, Switzerland, the University of Bonn, Germany and CLAM Petroleum Company, The Hague, The Netherlands.

EXCURSION IN SPRING 1984 (10 days).

ESTIMATED COSTS : ranging from U.S. \$1.500,- to \$2.000,-.

25 % reduction for university scientists and junior scientists (under 26 years). The costs include accommodation, food and transport during the excursion.

FACIES MODELS IN THE SOUTHERN PYRENEES, SPAIN

Course nr. 4/84

Excellent outcrop conditions within the Eocene Tremp-Graus basin in the southern Pyrenees, Spain, allow detailed sedimentological studies. The facies model course will consist of following topics :

1. Tidal deposits (tidal channels, estuary mouth, tidal deltas).
2. Tidal influenced alluvial systems (e.g. inner estuary).
3. A coastal plain river system.
4. An alluvial fan complex.
5. A corallgal reef complex.

Besides geometrical, sequential and structural studies, extensive attention will be given to diagenetic aspects and faunal assemblages. Within the field laboratory thin sections, aerial photographs and faunal assemblages can be studies.

COURSE IN MAY 1984 (10 days).

ESTIMATED COSTS : ranging from U.S. \$1.200,- to \$1.500,-. 25 % reduction for university scientists and junior scientists (under 26 years). The costs include accommodation, food and transport during the course.

INTERNATIONAL SYMPOSIUM ON MODERN AND ANCIENT

CLASTIC TIDAL DEPOSITS

An international meeting on modern and ancient clastic tidal deposits will be organized in Spring 1985 in the Netherlands.

The purpose of this meeting is to bring together specialists on clastic tidal deposits in order to discuss a wide variety of aspects dealing with physical, chemical and biological processes, and their products of modern tidal basins, and also their analogues.

For more detailed information, write to :  
Comparative Sedimentology Division  
Institute of Earth Sciences, Budapestlaan 4  
3508 TA Utrecht, THE NETHERLANDS

Please indicate title and number of course(s) you want information about.

Editor  
Cl. MONTY,  
General Secretary