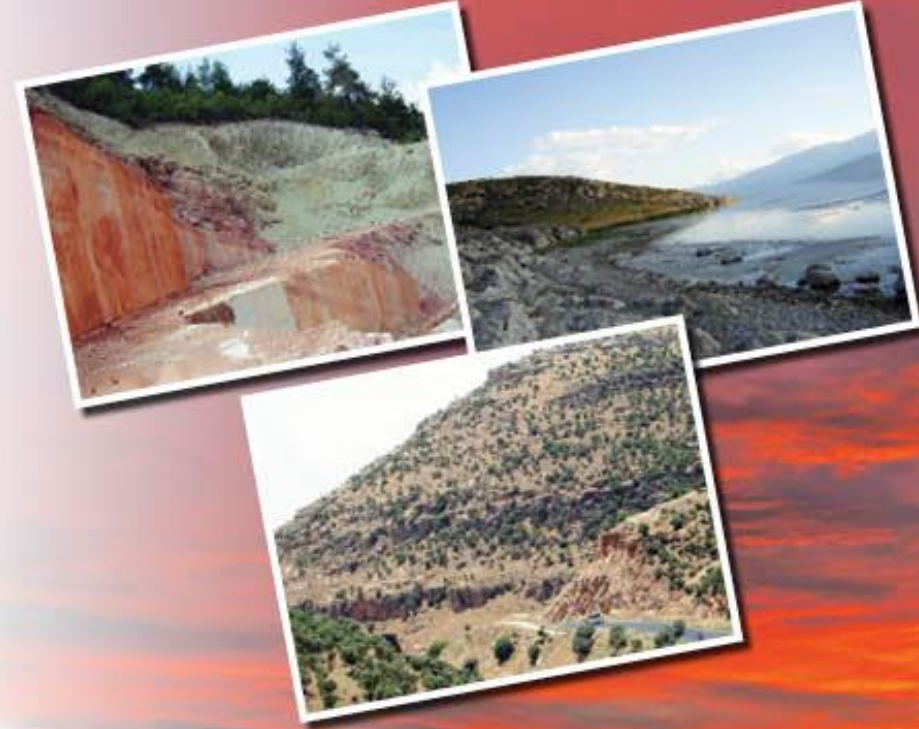




39th International Meeting of Sedimentology (IMS)

14th – 16th June 2027

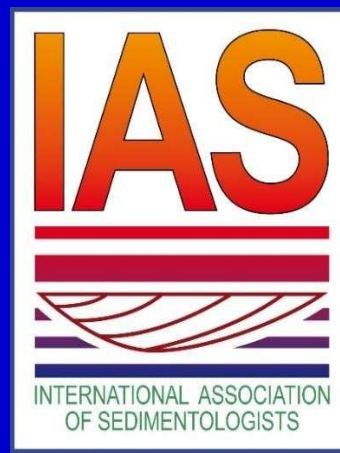
Çeşme - İzmir / TÜRKİYE



www.ias2027izmir.org

Host institution:

Middle East Technical University (METU) Ankara-Türkiye



- Established at 1956
- Language of the university is totally **English**
- 27,500 students
- Wide international relationships (Undergraduate and graduate students from many countries attend a semester or a year-round at METU as "Special Student" or "Exchange Student". Middle East Technical University is currently conducting Student Exchange Program activities with many universities around the world).
- International Joint Degree Program with SUNY Binghamton
- METU North Cyprus Campus-(SUNY New Paltz)
- ABET (Accreditation Board for Engineering and Technology, Inc.) in 2002 and judged to be "substantially equivalent" to accredited engineering programs in the United States.
- <https://www.metu.edu.tr/>

Why Çeşme (Location & Venue)



- ✓ Çeşme is the touristic village of city İzmir, Türkiye
- ✓ Çeşme lies on the Aegean Sea coast and has a good capacity in all respects for big meetings
- ✓ International airport and direct flights from Europe to İzmir or vice versa
- ✓ Almost 2 million international tourists visiting İzmir each year

Venue: Altın Yunus Hotel Çeşme, İzmir, Türkiye



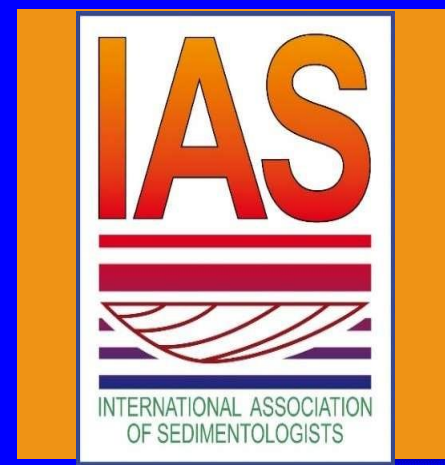
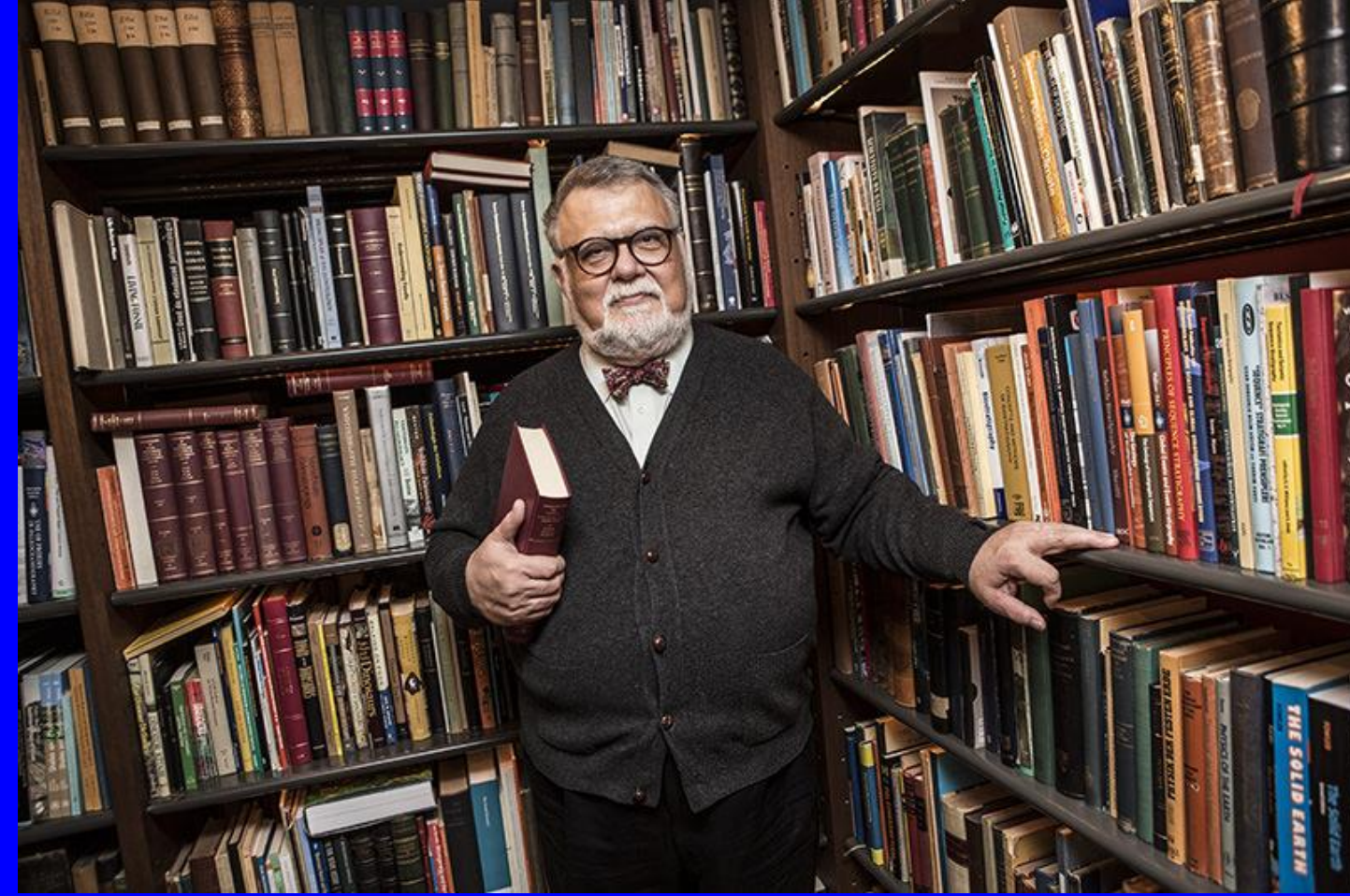
<https://altinyunus.com.tr/>



The hotel is situated on a vast area spanning 140,000 m2, specifically located at the Boyalık District of Çeşme. This town, renowned as the pearl of the Aegean, rests 80 kilometers west of Izmir. With a history starting from the summer season of 1974, the hotel has established itself as a distinguished brand. Altın Yunus stands as an exemplary five-star resort and a premium holiday village within this locale. The hotel boasts a total of 423 well-appointed rooms, along with a marina that has the capacity to accommodate up to 200 yachts. Furthermore, the premises include 7 versatile meeting rooms of different sizes. (The size of meeting rooms differs from 80 seats to 1000 seats in theatre style.)

Disabled individuals, much like any other tourists, actively partake in the global tourism industry. Hotels assume a significant responsibility in catering to their needs. In Turkey, hospitality establishments are strictly mandated to follow comprehensive guidelines encompassing various aspects. These guidelines encompass physical layouts, architectural barriers (such as doors and staircases), the provision of essential amenities, and the allocation of an appropriate number of rooms designed for disabled individuals, all as stipulated by the regulations. Moreover, these designated rooms are ideally positioned on the ground floor, with accessible bathroom facilities meticulously arranged for disabled tourists. Notably, the Altın Yunus Hotel diligently fulfills all these requirements, epitomizing its status as a five-star establishment.

Saloon Name	Capacity
1. GARDENYA	1000 person
2. OKYANUS	250 person
3. DENİZ KIZI 1	120 person
4. DENİZ KIZI 2	70 person
5. DENİZ KIZI 3	40 person
6. GERENCE 1	180 person
7. GERENCE 2	80 person



- Prof. Dr. A.M. Celal ŞENGÖR (Honorary Member)
- Prof. Dr. Ahmet YOZGATLIGİL (President of the Middle East Technical University, Türkiye) (Honorary Member)
- Prof. Dr. İsmail Ömer YILMAZ (Chair-METU)





39TH INTERNATIONAL MEETING OF SEDIMENTOLOGY (IMS)
14TH – 16TH JUNE 2027 | ÇEŞME - İZMİR / TÜRKİYE



SEDIMENTOLOGY WORKING GROUP

ABOUT IAS 2027 ▼

PROGRAM ▼

INSTRUCTIONS ▼

ATTEND ▼

FIELD TRIPS

USEFUL INFO ▼

SPONSORSHIP

CONTACT



ACCOMMODATION



REGISTRATION



KEYNOTE SPEAKERS



DETAILED PROGRAM



39TH INTERNATIONAL MEETING OF SEDIMENTOLOGY (IMS)
14TH – 16TH JUNE 2027 | ÇEŞME - İZMİR / TÜRKİYE



SEDIMENTOLOGY WORKING GROUP

ABOUT IAS 2027 ▼

PROGRAM ▼

INSTRUCTIONS ▼

ATTEND ▼

FIELD TRIPS

USEFUL INFO ▼

SPONSORSHIP

CONTACT

ABOUT IAS 2027

PROGRAM

INSTRUCTIONS

ATTEND

FIELD TRIPS

USEFUL INFO

SPONSORSHIP

CONTACT

PROGRAM

[HOME](#) / / [PROGRAM](#)

GENERAL OVERVIEW

DETAILED PROGRAM

KEYNOTE SPEAKERS

COURSE



39TH INTERNATIONAL MEETING OF SEDIMENTOLOGY (IMS)
14TH – 16TH JUNE 2027 | ÇEŞME - İZMİR / TÜRKİYE



SEDIMENTOLOGY WORKING GROUP

[ABOUT IAS 2027](#) ▼

[PROGRAM](#) ▼

[INSTRUCTIONS](#) ▼

[ATTEND](#) ▼

[FIELD TRIPS](#)

[USEFUL INFO](#) ▼

[SPONSORSHIP](#)

[CONTACT](#)

[GENERAL OVERVIEW](#)

[DETAILED PROGRAM](#)

[KEYNOTE SPEAKERS](#)

[COURSE](#)

KEYNOTE SPEAKERS

[HOME](#) / [PROGRAM](#) / [KEYNOTE SPEAKERS](#)



PROF. CATHY HOLLIS

University of Manchester
UK



PROF. DR. XIUMIAN HU

Nanjing University
China



PROF. DR. JUERGEN SCHIEBER

Indiana University
USA



39TH INTERNATIONAL MEETING OF SEDIMENTOLOGY (IMS)
14TH - 16TH JUNE 2027 | ÇEŞME - İZMİR / TÜRKİYE



SEDIMENTOLOGY WORKING GROUP

ABOUT IAS 2027 ▾

PROGRAM ▾

INSTRUCTIONS ▾

ATTEND ▾

FIELD TRIPS

USEFUL INFO ▾

SPONSORSHIP

CONTACT

GENERAL OVERVIEW

DETAILED PROGRAM

KEYNOTE SPEAKERS

COURSE

COURSE

[HOME](#) / [PROGRAM](#) / [COURSE](#)

ONE DAY SHALE SHORT COURSE



ACCOMMODATION



REGISTRATION



KEYNOTE SPEAKERS



DETAILED PROGRAM



Overview of 1 Week Shale Shortcourse

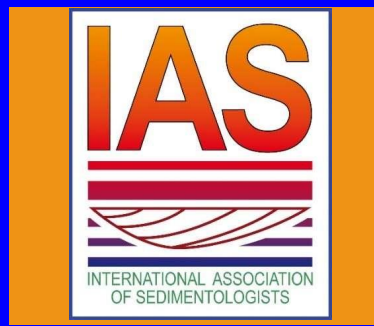
Wintershall GmbH, May 2011

IU SHALE RESEARCH LAB

Jürgen Schieber
Department of Geological Sciences
Indiana University
Bloomington, Indiana 47405

Possible List of Sessions

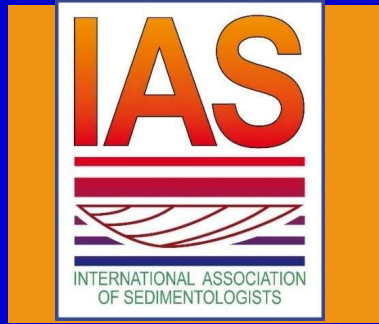
Theme: Sediment routing between continents



Possible Sessions, short courses, workshops

- S-1 Carbonate Slope and Basins
- S-2 Sedimentology of Source Rocks
- S-3 Non-Marine Carbonates and Their Processes
- S-4 Fluvial Systems
- S-5 Palaeoclimate & Climate Change Records
- S-6 Clastic Systems
- S-7 Marine Carbonates and Diagenesis
- S-8 Sediment Route from Source to Sink
- S-9 Biogeochemical Process in Sedimentology
- S-10 Lacustrine Systems
- Open/Special Sessions
- S-11 Cyclic and Event Sedimentation
- S-12 Volcanoclastics
- S-13 Glacial Deposits
- S-14 Basin Analysis and Modelling
- S-15 Diagenesis and Geochemical Records
- S-16 Plenatary Sedimentary Records
- S-17 Sedimentary Geosites
- S-18 AI applications in sedimentology
- S-19 Applied Sedimentology
- S-20 Experimental Sedimentology
- S-21 Organism Sediment interaction
- - Others

Field Trips



- A wide range of field excursions are offered to the registered participants as pre-mid- and post-meeting field trips. Social trips will also be announced.

- Pre-Meeting

- Mid-Meeting

- Post-Meeting



Details will be announced soon...

Field Trip 1 - Jurassic-Cretaceous Carbonate Platform

Karaburun, Izmir , W Türkiye



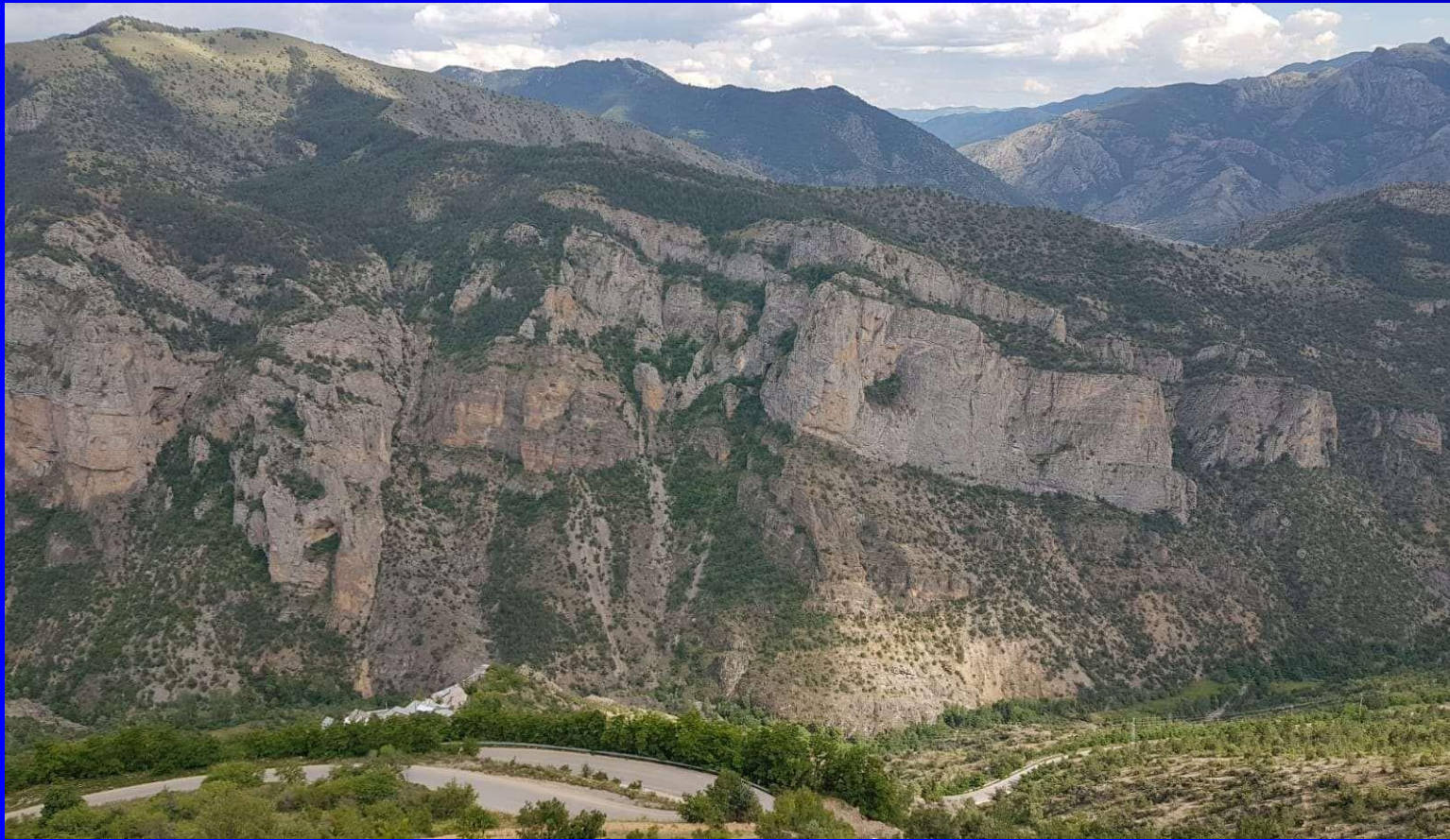
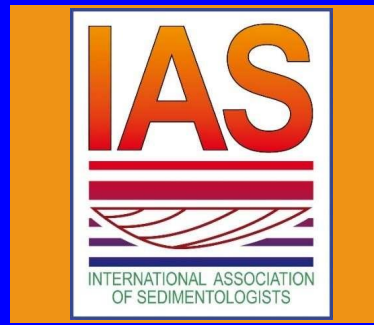
Field Trip 2 - Jurassic-Cretaceous Platform Carbonates, records of sea level changes (Taurides), SW Türkiye



Field Trip 3 - Cretaceous Anoxic Events and Black shales (Western Pontides, Mudurnu-Goynuk Basin) (NW Türkiye)



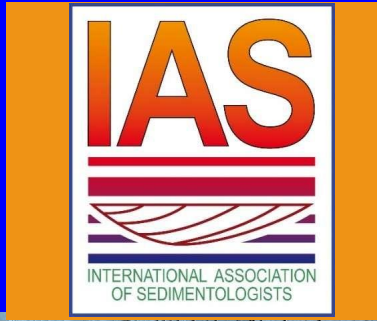
Field Trip 4 - Mesozoic Basins and Tethyan Successions of the Eastern Black Sea Region, NE Türkiye



Field Trip 5 - Soft-sediment deformation structures in Neogene fluvio-lacustrine deposits, Elazığ, Eastern Türkiye



Field Trip 6 - Travertines and continental carbonates from western Türkiye: Pamukkale and Lake Salda





Field Trip 7 - Cappadocia Ignimbrites, volcanic and sedimentary systems (Central Turkey)

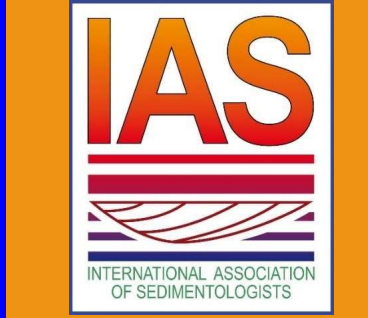




Field Trip 8- Petroleum system of the Adiyaman Region, Arabian Platform (SE Türkiye)



Field Trip 9 - Lake Van Region Seismites-Eastern Türkiye



Süphan Volcano

Lake Van



HOPE TO MEET IN TÜRKİYE

